



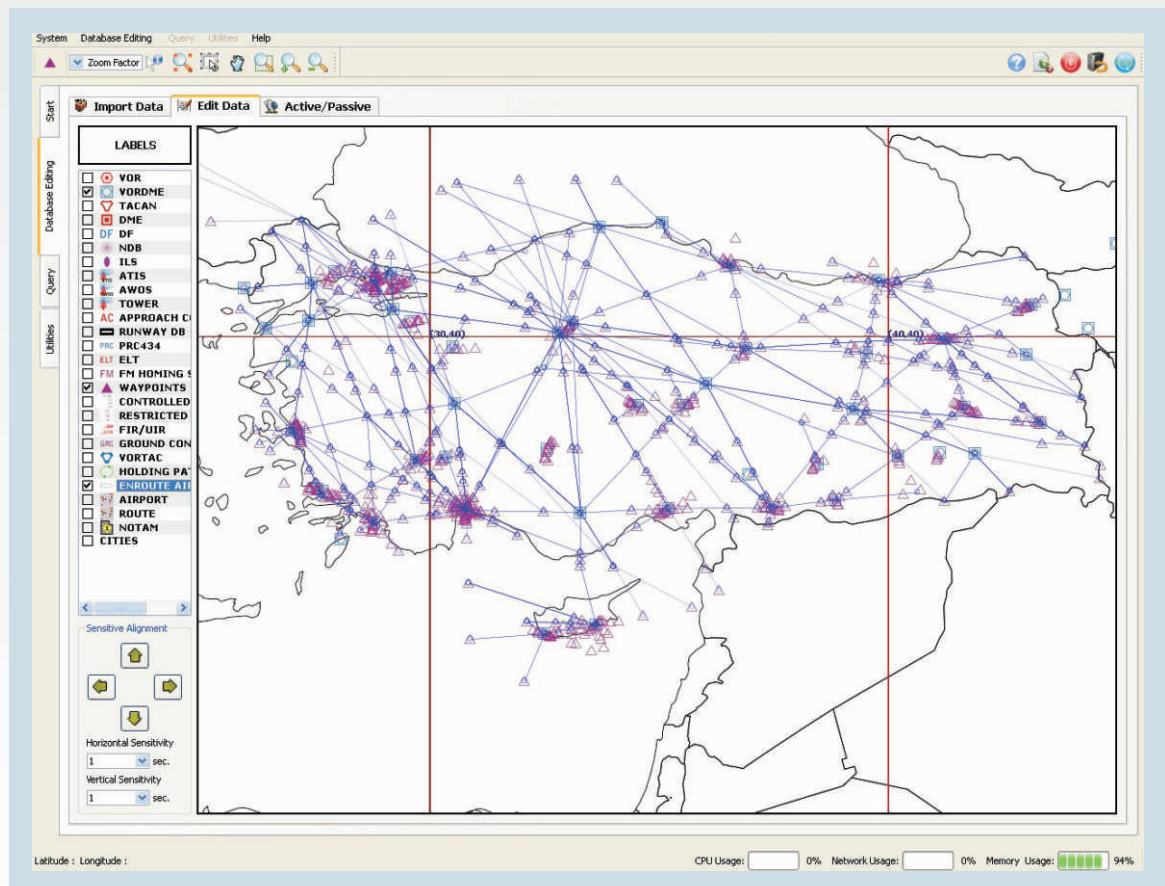
NAVITron™ - Navigation Simulation Server

KaTron's NAVITron™ is a next-generation Navigation Simulation Server software that provides navigation database services for all kinds of simulator applications. NAVITron™ consists of two modules:

- + Navigation database server to enable queries for navigation information
- + Navigation database editing and creation

NAVITron™ Features

- + Client - Server Architecture (support for multiple clients in multiple exercises)
- + HLA Interface
- + TCP/IP Interface
- + Supports ARINC 424 and DAFIF formats
- + Access magnetic variation information
- + Navigation Database Editing & Creation module:
 - + Reads ARINC 424 and DAFIF formats
 - + Data extraction and display
 - + Navigation objects access, modification and addition on map
 - + Unique interface for navigation station, runway and communication station





NAVITron™ - Navigation Simulation Server

The screenshot displays the NAVITron software interface, which is used for navigation simulation. The main window shows a map of a region with various navigation aids and waypoints. The interface includes a menu bar (System, Database Editing, Query, Utilities, Help), a toolbar, and a sidebar with options like Start, Database Editing, Query, and Utilities. The main map area shows a network of navigation aids and waypoints, with a legend on the left listing various types of aids such as VOR, VOR/DME, TACAN, DME, DF, NDB, ILS, ATIS, AWOS, TOWER, AC, APPROACH C, RUNWAY DB, PRC, PRC 434, ELT, FM, HOMING, WAYPOINTS, CONTROLLED, RESTRICTED, FIR/UIR, GROUND CON, VORTAC, HOLDING PA, AIRPORT, ROUTE, NOTAM, and CITIES. The map also shows a grid and various navigation parameters.

Below the main map, there are several smaller windows and panels:

- Table:** A table listing navigation aids with columns for id, icao, name, altitude, area_code, country, distribution, frequency, modified, name, and range. The table contains 24 rows of data.
- TACAN Configuration Form:** A form for configuring a TACAN station. It includes fields for State, Name, ICAO, Altitude (ft), Latitude (Deg.), Longitude (Deg.), Manual Code, Channel No., Distribution (Deg.), and Country. The form also has buttons for Update, Delete, and Cancel.
- Map Panels:** Two smaller map panels showing different views of the navigation simulation, including a zoomed-in view of a specific area and a view showing the distribution of navigation aids.

The interface also displays system status information such as CPU Usage (7%), Network Usage (0%), and Memory Usage (72%).